

## Worm Gear Clamps

### Features:

- clamp meets SAEJ1508 which supercedes Mil Spec WW-C-440B
- four-piece construction
- screw design: 5/16" slotted hex head
- maximum recommended torque 50 in. lbs.
- **all clamps sold 10 per box**

### Style HS material:

- band and housing: SAE 201/301 series stainless
- screw: SAE 1018 case-hardened, hex-free chrome zinc-plated steel

### Style HSS material:

- band and housing: SAE 300 series stainless
- screw: SAE 300 series stainless



style HS



style HSS

| Band Width | Hose OD  |         | style HS Part # | Master Case Qty | style HSS Part # | Master Case Qty |
|------------|----------|---------|-----------------|-----------------|------------------|-----------------|
|            | from     | to      |                 |                 |                  |                 |
| 1/2"       | 7/16"    | 25/32"  | <b>HS6</b>      | 200             | <b>HSS6</b>      | 200             |
|            | 1/2"     | 29/32"  | <b>HS8</b>      | 200             | <b>HSS8</b>      | 200             |
|            | 9/16"    | 1-1/16" | <b>HS10</b>     | 500             | <b>HSS10</b>     | 500             |
|            | 11/16"   | 1-1/14" | <b>HS12</b>     | 500             | <b>HSS12</b>     | 500             |
|            | 13/16"   | 1-1/2"  | <b>HS16</b>     | 500             | <b>HSS16</b>     | 500             |
|            | 13/16"   | 1-3/4"  | <b>HS20</b>     | 500             | <b>HSS20</b>     | 500             |
|            | 1-1/16"  | 2"      | <b>HS24</b>     | 500             | <b>HSS24</b>     | 500             |
|            | 1-5/16"  | 2-1/4"  | <b>HS28</b>     | 500             | <b>HSS28</b>     | 500             |
|            | 1-9/16"  | 2-1/2"  | <b>HS32</b>     | 500             | <b>HSS32</b>     | 500             |
|            | 1-13/16" | 2-3/4"  | <b>HS36</b>     | 500             | <b>HSS36</b>     | 500             |
|            | 2-1/16"  | 3"      | <b>HS40</b>     | 200             | <b>HSS40</b>     | 200             |
|            | 2-5/16"  | 3-1/4"  | <b>HS44</b>     | 200             | <b>HSS44</b>     | 200             |
|            | 2-9/16"  | 3-1/2"  | <b>HS48</b>     | 200             | <b>HSS48</b>     | 200             |
|            | 2-13/16" | 3-3/4"  | <b>HS52</b>     | 200             | <b>HSS52</b>     | 200             |
|            | 3-1/16"  | 4"      | <b>HS56</b>     | 200             | <b>HSS56</b>     | 200             |
|            | 3-5/16"  | 4-1/4"  | <b>HS60</b>     | 200             | <b>HSS60</b>     | 200             |
| 9/16"      | 3-9/16"  | 4-1/2"  | <b>HS64</b>     | 200             | <b>HSS64</b>     | 200             |
|            | 1-7/8"   | 5"      | <b>HS72</b>     | 100             | <b>HSS72</b>     | 100             |
|            | 2-1/2"   | 5-1/2"  | <b>HS80</b>     | 100             | <b>HSS80</b>     | 100             |
|            | 3-1/8"   | 6"      | <b>HS88</b>     | 100             | <b>HSS88</b>     | 100             |
|            | 3-5/8"   | 6-1/2"  | <b>HS96</b>     | 100             | <b>HSS96</b>     | 100             |
|            | 4-1/8"   | 7"      | <b>HS104</b>    | 100             | <b>HSS104</b>    | 100             |
|            | 5-5/8"   | 8-1/2"  | <b>HS128</b>    | 100             | <b>HSS128</b>    | 100             |
|            | 7-1/8"   | 10"     | <b>HS152</b>    | 100             | <b>HSS152</b>    | 100             |
|            | 9-3/8"   | 12-1/4" | <b>HS188</b>    | 100             | <b>HSS188</b>    | 100             |
|            | 10-1/8"  | 13"     | <b>HS200</b>    | 100             | <b>HSS200</b>    | 100             |
|            | 10-7/8"  | 13-3/4" | <b>HS212</b>    | 100             | <b>HSS212</b>    | 100             |
|            | 11-5/8"  | 14-1/2" | <b>HS224</b>    | 100             | <b>HSS224</b>    | 100             |
|            | 12-3/8"  | 15-1/4" | <b>HS236</b>    | 100             | <b>HSS236</b>    | 100             |
|            | 13-1/8"  | 16"     | <b>HS248</b>    | 100             | <b>HSS248</b>    | 100             |
|            | 17-1/8"  | 20"     | <b>HS312</b>    | 100             | <b>HSS312</b>    | 100             |

## Miniature Worm Gear Clamps

### Features:

- meets SAE J1508
- screw design: 1/4" slotted hex head
- maximum recommended torque 15 in. lbs.
- **all clamps sold 10 per box**

### Style MH material:

- band and housing: SAE 201/301 series stainless
- screw: SAE 1018 case-hardened, hex-free chrome zinc-plated steel

### Style MAH material:

- band and housing: SAE 300 series stainless
- screw: SAE 300 series stainless



style MH



style MAH

| Band Width | Hose OD |         | style MH Part # | Master Case Qty | style MAH Part # | Master Case Qty |
|------------|---------|---------|-----------------|-----------------|------------------|-----------------|
|            | from    | to      |                 |                 |                  |                 |
| 5/16"      | 7/32"   | 5/8"    | <b>MH4</b>      | 500             | <b>MAH4</b>      | 500             |
|            | 7/16"   | 25/32"  | <b>MH6</b>      | 500             | <b>MAH6</b>      | 500             |
|            | 1/2"    | 29/32"  | <b>MH8</b>      | 200             | <b>MAH8</b>      | 200             |
|            | 9/16"   | 1-1/16" | <b>MH10</b>     | 200             | <b>MAH10</b>     | 200             |
|            | 11/16"  | 1-1/4"  | <b>MH12</b>     | 200             | <b>MAH12</b>     | 200             |
|            | 15/16"  | 1-1/2"  | <b>MH16</b>     | 200             | <b>MAH16</b>     | 200             |
|            | 1-3/16" | 1-3/4"  | <b>MH20</b>     | 200             | <b>MAH20</b>     | 200             |



Torque ratings correspond to the torque rating of the screw of the clamp and are not an indication of the working pressure of any hose assembly installed with this clamp.

## Marine Grade Worm Gear Clamps

**Features:**

- three-piece construction
- clamp meets SAEJ1508 which supercedes Mil Spec WW-C-440B
- 316 marine grade SS: band, screw, housing
- screw design: 5/16" slotted hex head
- maximum recommended torque 50 in. lbs.
- **all clamps sold 10 per box**

| Band Width | Hose OD |               | 316 Stainless Steel Part # |
|------------|---------|---------------|----------------------------|
|            | from    | to            |                            |
| 1/2"       | 3/8"    | 7/8"          | <i>MGC6</i>                |
|            | 7/16"   | 1"            | <i>MGC8</i>                |
|            | 1/2"    | 1-1/16"       | <i>MGC10</i>               |
|            | 1/2"    | 1-1/4"        | <i>MGC12</i>               |
|            | 11/16"  | 1-1/2"        | <i>MGC16</i>               |
|            | 3/4"    | 1-3/4"        | <i>MGC20</i>               |
|            | 1"      | 2"            | <i>MGC24</i>               |
|            | 1-1/4"  | 2-1/4"        | <i>MGC28</i>               |
|            | 1-1/2"  | 2-1/2"        | <i>MGC32</i>               |
|            | 1-3/4"  | 2-3/4"        | <i>MGC36</i>               |
|            | 2"      | 3"            | <i>MGC40</i>               |
|            | 2-1/4"  | 3-1/4"        | <i>MGC44</i>               |
|            | 2-1/2"  | 3-1/2"        | <i>MGC48</i>               |
|            | 2-3/4"  | 3-3/4"        | <i>MGC52</i>               |
|            | 3"      | 4"            | <i>MGC56</i>               |
|            | 2-1/2"  | 4-1/2"        | <i>MGC64</i>               |
|            | 3"      | 5"            | <i>MGC72</i>               |
|            | 3-1/2"  | 5-1/2"        | <i>MGC80</i>               |
|            | 4"      | 6"            | <i>MGC88</i>               |
|            | 4-1/2"  | 6-1/2"        | <i>MGC96</i>               |
| 5"         | 7"      | <i>MGC104</i> |                            |



## WaveSeal Clamps

**Application:**

- provides optimal retention in applications involving thermal cycling and / or high vibration

**Features:**

- produces a sealing O-ring effect that prevents leakage
- 5/16" head screw
- **all clamps sold 10 per box**
- construction:
  - band: 301 stainless steel
  - liner and housing: 304 stainless steel
  - screw: 410 stainless steel

| Band Width | Hose OD  |          | Stainless Steel Part # |
|------------|----------|----------|------------------------|
|            | from     | to       |                        |
| 9/16"      | 13/16"   | 1-19/64" | <i>WSS16</i>           |
|            | 1-1/16"  | 1-3/8"   | <i>WSS19</i>           |
|            | 1"       | 1-9/16"  | <i>WSS20</i>           |
|            | 1-1/8"   | 1-11/16" | <i>WSS22</i>           |
|            | 1-3/16"  | 1-13/16" | <i>WSS24</i>           |
|            | 1-5/16"  | 2-1/16"  | <i>WSS28</i>           |
|            | 1-9/16"  | 2-5/16"  | <i>WSS32</i>           |
|            | 1-5/8"   | 2-7/16"  | <i>WSS34</i>           |
|            | 1-11/16" | 2-9/16"  | <i>WSS36</i>           |
|            | 1-13/16" | 2-13/16" | <i>WSS40</i>           |
|            | 2-1/16"  | 3-1/16"  | <i>WSS44</i>           |
|            | 2-3/16"  | 3-5/16"  | <i>WSS48</i>           |
|            | 2-3/8"   | 3-9/16"  | <i>WSS52</i>           |
|            | 2-1/2"   | 3-13/16" | <i>WSS56</i>           |
|            | 2-11/16" | 4-1/16"  | <i>WSS60</i>           |
|            | 2-13/16" | 4-5/16"  | <i>WSS64</i>           |
|            | 3-3/16"  | 4-13/16" | <i>WSS72</i>           |
|            | 3-9/16"  | 5-5/16"  | <i>WSS80</i>           |
|            | 3-13/16" | 5-13/16" | <i>WSS88</i>           |



## Quick Release Clamps

### Features:

- maximum recommended torque: 30 in. lbs.
- band and housing: 301 series stainless
- screw design: 5/16" slotted hex head
- **Parts showing package quantities are sold in package quantities only.**



- Torque ratings correspond to the torque rating of the screw of the clamp and are *not* an indication of the working pressure of any hose assembly installed with this clamp.

### Style LS:

- screw: plated hardened carbon steel

### Style LSS:

- screw: SAE 410 series stainless



style LS



style LSS

| Band Width | Hose OD  |          | style LS     | Pkg Qty | style LSS     | Pkg Qty |
|------------|----------|----------|--------------|---------|---------------|---------|
|            | from     | to       | Part #       |         | Part #        |         |
| 1/2"       | 1-1/2"   | 3-1/2"   | <b>LS48</b>  | 10      | <b>LSS48</b>  | 10      |
|            | 1"       | 4"       | <b>LS56</b>  | 10      | ---           | --      |
|            | 2"       | 5"       | <b>LS72</b>  | 10      | <b>LSS72</b>  | 10      |
|            | 2-1/16"  | 6"       | <b>LS88</b>  | 10      | <b>LSS88</b>  | 10      |
|            | 3-1/2"   | 6-9/16"  | <b>LS96</b>  | --      | ---           | --      |
|            | 1-3/4"   | 7"       | <b>LS104</b> | 10      | <b>LSS104</b> | 10      |
|            | 1-3/4"   | 8-9/16"  | <b>LS128</b> | --      | <b>LSS128</b> | --      |
|            | 2"       | 10"      | <b>LS152</b> | --      | ---           | --      |
|            | 2-1/16"  | 12-5/16" | <b>LS188</b> | --      | <b>LSS188</b> | --      |
|            | 10-3/16" | 14"      | ---          | --      | <b>LSS216</b> | --      |
|            | 10-3/4"  | 16"      | ---          | --      | <b>LSS248</b> | --      |
|            | 14"      | 20"      | ---          | --      | <b>LSS312</b> | --      |

## Thumb Screw Clamps

### Features:

- worm gear style clamp, no tools required
- screw cap removable to make clamp tamper resistant
- plated carbon steel screw with a yellow thermoplastic screw cap, removable and reusable
- band and housing are stainless steel



| Band Width | Hose OD |        | Stainless Steel Part # | Pkg Qty |
|------------|---------|--------|------------------------|---------|
|            | from    | to     |                        |         |
| 5/16"      | 1/4"    | 5/8"   | <b>MH4Y</b>            | 10      |
| 1/2"       | 1/2"    | 1-1/4" | <b>HS12Y</b>           | 10      |
| 1/2"       | 3/4"    | 1-3/4" | <b>HS20Y</b>           | 10      |
| 1/2"       | 1-1/4"  | 2-1/4" | <b>HS28Y</b>           | 10      |

## Aero-Seal® Clamps

**Features:**

- four-piece construction
- band slots designed for strength and smooth action
- saddle interlocks into embossed band to form a true concentric circle
- slotted hex head screw design
- heat treated screws have buttress thread type
- safety collar or thumb screw available on the style 200 series only
- maximum recommended torque 50 in. lbs.
- **all clamps sold 10 per box**



• Torque ratings correspond to the torque rating of the screw of the clamp and are not an indication of the working pressure of any hose assembly installed with this clamp.

**Style 100:**

- band and housing: 300 SS
- screw: plated carbon steel

**Style 200:**

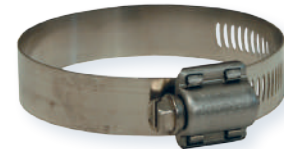
- band and housing: 300 SS
- screw: 410 stainless steel

**Style 300:**

- band and housing: 302 SS
- screw: 305 stainless steel



style 100



style 200



style 300

| Band Width | Hose OD  |         | Style 100    | Style 200    | Style 300    | Pkg Qty |
|------------|----------|---------|--------------|--------------|--------------|---------|
|            | from     | to      | Part #       | Part #       | Part #       |         |
| 9/16"      | 7/16"    | 25/32"  | <b>10006</b> | <b>20006</b> | <b>30006</b> | 10      |
|            | 1/2"     | 29/32"  | <b>10008</b> | <b>20008</b> | <b>30008</b> | 10      |
|            | 9/16"    | 1-1/16" | <b>10010</b> | <b>20010</b> | <b>30010</b> | 10      |
|            | 11/16"   | 1-1/4"  | <b>10012</b> | <b>20012</b> | <b>30012</b> | 10      |
|            | 13/16"   | 1-1/2"  | <b>10016</b> | <b>20016</b> | <b>30016</b> | 10      |
|            | 13/16"   | 1-3/4"  | <b>10020</b> | <b>20020</b> | <b>30020</b> | 10      |
|            | 1-1/16"  | 2"      | <b>10024</b> | <b>20024</b> | <b>30024</b> | 10      |
|            | 1-5/16"  | 2-1/4"  | <b>10028</b> | <b>20028</b> | <b>30028</b> | 10      |
|            | 1-9/16"  | 2-1/2"  | <b>10032</b> | <b>20032</b> | <b>30032</b> | 10      |
|            | 1-13/16" | 2-3/4"  | <b>10036</b> | <b>20036</b> | <b>30036</b> | 10      |
|            | 1-1/16"  | 3"      | <b>10040</b> | <b>20040</b> | <b>30040</b> | 10      |
|            | 2-5/16"  | 3-1/4"  | <b>10044</b> | <b>20044</b> | <b>30044</b> | 10      |
|            | 2-9/16"  | 3-1/2"  | <b>10048</b> | <b>20048</b> | <b>30048</b> | 10      |
|            | 2-13/16" | 3-3/4"  | <b>10052</b> | <b>20052</b> | <b>30052</b> | 10      |
|            | 3-1/16"  | 4"      | <b>10056</b> | <b>20056</b> | <b>30056</b> | 10      |
|            | 3-5/16"  | 4-1/4"  | <b>10060</b> | <b>20060</b> | <b>30060</b> | 10      |

## Aero-Seal® Liner Clamps

**Features:**

- The integral extension of the band as a liner (no rivets or welds) protects soft surface hose (silicone and others) from damage caused by extrusion or shearing through the band slots.
- screw design: 5/16 hex slotted hex head
- **all clamps sold 10 per box**
- band, saddle, housing: stainless steel

**Style DL:**

- screw: plated carbon steel

**Style DLS:**

- screw: 410 stainless steel

| Band Width | Hose OD  |         | style DL      | Pkg Qty | style DLS      | Pkg Qty |
|------------|----------|---------|---------------|---------|----------------|---------|
|            | from     | to      | Part #        |         | Part #         |         |
| 1/2"       | 7/16"    | 25/32"  | <b>DL9206</b> | 10      | <b>DLS9406</b> | 10      |
|            | 1/2"     | 29/32"  | <b>DL9208</b> | 10      | <b>DLS9408</b> | 10      |
|            | 9/16"    | 1-1/16" | <b>DL9210</b> | 10      | <b>DLS9410</b> | 10      |
|            | 11/16"   | 1-1/4"  | <b>DL9212</b> | 10      | <b>DLS9412</b> | 10      |
|            | 13/16"   | 1-1/2"  | <b>DL9216</b> | 10      | <b>DLS9416</b> | 10      |
|            | 13/16"   | 1-3/4"  | <b>DL9220</b> | 10      | <b>DLS9420</b> | 10      |
|            | 1-1/16"  | 2"      | <b>DL9224</b> | 10      | <b>DLS9424</b> | 10      |
|            | 1-5/16"  | 2-1/4"  | <b>DL9228</b> | 10      | <b>DLS9428</b> | 10      |
|            | 1-9/16"  | 2-1/2"  | <b>DL9232</b> | 10      | <b>DLS9432</b> | 10      |
|            | 1-13/16" | 2-3/4"  | <b>DL9236</b> | 10      | <b>DLS9436</b> | 10      |
|            | 2-1/16"  | 3"      | <b>DL9240</b> | 10      | <b>DLS9440</b> | 10      |
|            | 2-5/16"  | 3-1/4"  | <b>DL9244</b> | 10      | <b>DLS9444</b> | 10      |
|            | 2-9/16"  | 3-1/2"  | <b>DL9248</b> | 10      | <b>DLS9448</b> | 10      |



style DLS

## HTM Hi Torque Clamps

### Features:

- withstands more than three times the SAE torque requirements for worm-driven clamps
- eight screw threads are engaged in the band simultaneously for incredible torquing drive (over 150 in. lbs.), sealing pressure and vibration resistance
- slotted hex head screw design

### Materials:

- band and housing: 300 series half hard stainless
- screw: 410 stainless steel screw



style HTM

| Band Width | Hose OD |        | Stainless Steel Part # | Opt Qty |
|------------|---------|--------|------------------------|---------|
|            | from    | to     |                        |         |
| 5/8"       | 1 1/4"  | 2 1/8" | <b>HTM200</b>          | 10      |
|            | 1 3/4"  | 2 5/8" | <b>HTM250</b>          | 10      |
|            | 2 1/4"  | 3 1/8" | <b>HTM300</b>          | 10      |
|            | 2 3/4"  | 3 5/8" | <b>HTM350</b>          | 10      |
|            | 3 1/2"  | 4 1/8" | <b>HTM400</b>          | 10      |
|            | 3 3/4"  | 4 5/8" | <b>HTM450</b>          | 10      |
|            | 4 1/4"  | 5 1/8" | <b>HTM500</b>          | 10      |
|            | 4 3/4"  | 5 5/8" | <b>HTM550</b>          | 10      |
|            | 5 1/4"  | 6 1/8" | <b>HTM600</b>          | 10      |
|            | 5 3/4"  | 6 5/8" | <b>HTM650</b>          | 10      |
|            | 6 1/4"  | 7 1/8" | <b>HTM700</b>          | 10      |
|            | 6 3/4"  | 7 5/8" | <b>HTM750</b>          | 10      |
|            | 7 1/4"  | 8 1/8" | <b>HTM800</b>          | 10      |
|            | 7 3/4"  | 8 5/8" | <b>HTM850</b>          | 10      |
|            | 8 1/4"  | 9 1/8" | <b>HTM900</b>          | 10      |



style HP

| extended range sizes |         |        |                        |  |
|----------------------|---------|--------|------------------------|--|
| Band Width           | Hose OD |        | Stainless Steel Part # |  |
|                      | from    | to     |                        |  |
| 5/8"                 | 1 1/4"  | 2 5/8" | <b>HP2</b>             |  |
|                      | 2 1/8"  | 4 1/8" | <b>HP3</b>             |  |
|                      | 4"      | 6 1/8" | <b>HP4</b>             |  |
|                      | 6 1/8"  | 9 1/8" | <b>HP5</b>             |  |

## Constant Torque Clamps

### Features:

- A patented Belleville spring mechanism permits the clamp to automatically increase or decrease its own diameter due to changes in operational or environmental temperatures.
- 3/8" hex, carbon steel screw
- 5/8" wide 304 stainless steel band

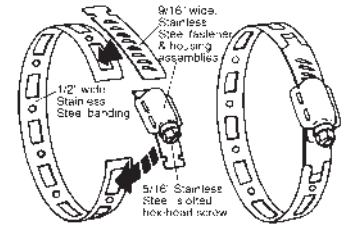


| Band Width | Hose OD |        | Part #        | Hose OD |        | Part #        |
|------------|---------|--------|---------------|---------|--------|---------------|
|            | from    | to     |               | from    | to     |               |
| 5/8"       | 1"      | 1 3/4" | <b>CT175L</b> | 5 1/4"  | 6 1/8" | <b>CT600L</b> |
|            | 1 1/4"  | 2 1/8" | <b>CT200L</b> | 5 3/4"  | 6 5/8" | <b>CT650L</b> |
|            | 1 3/4"  | 2 5/8" | <b>CT250L</b> | 6 1/4"  | 7 1/8" | <b>CT700L</b> |
|            | 2 1/4"  | 3 1/8" | <b>CT300L</b> | 6 3/4"  | 7 5/8" | <b>CT750L</b> |
|            | 2 3/4"  | 3 5/8" | <b>CT350L</b> | 7 1/4"  | 8 1/8" | <b>CT800L</b> |
|            | 3 1/4"  | 4 1/8" | <b>CT400L</b> | 7 3/4"  | 8 5/8" | <b>CT850L</b> |
|            | 3 3/4"  | 4 5/8" | <b>CT450L</b> | 8 1/4"  | 9 1/8" | <b>CT900L</b> |
|            | 4 1/4"  | 5 1/8" | <b>CT500L</b> | 8 3/4"  | 9 5/8" | <b>CT950L</b> |
|            | 4 3/4"  | 5 5/8" | <b>CT550L</b> | --      | --     | --            |

## Make-A-Clamp Kits

**Features:**

- A maintenance clamp system in a box; by simply cutting off a piece of banding from a continuous roll, you can make any size stainless steel worm-driven clamp from 3" diameter and up. It is a must for anyone likely to encounter requirements for varying sized large clamps.
- reusable
- band width: 1/2"
- band thickness: .023"
- screw design: 5/16" slotted hex head
- band and housing material: 302 stainless
- screw material: 410 stainless

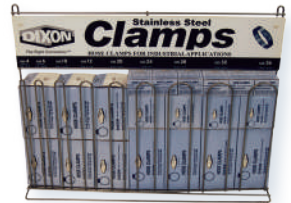


| Contents   | Stainless Steel<br>Part # |
|--|---------------------------|
| mini kit: 8 1/2' band, 3 adjustable fasteners, 1 band splice | <b>4000</b>               |
| kit with 100' band, 25 adjustable fasteners, 10 band splices | <b>4001</b>               |
| kit with 50' band, 10 adjustable fasteners, 5 band splices   | <b>4002</b>               |
| box with 10 adjustable fasteners: priced per box             | <b>4004</b>               |
| box with 100' band, 10 band splices                          | <b>4005</b>               |
| box with 50' band, 5 band splices                            | <b>4006</b>               |
| 6" demonstrator kit with clamps                              | <b>4007</b>               |
| box with 10 band splices: priced per box                     | <b>4008</b>               |

## Racks for Worm Gear Clamps

**Features:**

- top load metal rack made of nickel plated steel rods with enameled steel sign
- sign identifies each clamp size and diameter range
- rack with clamps contains 9 clamp sizes with diameter ranges from 7/32" - 2-3/4"
- Clamps included are:
  - 30 of part# MH4
  - 30 of part# MH6
  - 20 of part# HS10
  - 20 of part# HS12
  - 20 of part# HS20
  - 20 of part# HS24
  - 20 of part# HS28
  - 20 of part# HS32
  - 20 of part# HS36



CRWC



CR

| Description     | Part #      |
|-----------------|-------------|
| with 200 clamps | <b>CRWC</b> |
| without clamps  | <b>CR</b>   |